

# INSTALLATION INSTRUCTIONS

**APPLICATION:**  
**2019-2022 Ford F150 Police Responder**  
**PART NUMBER:**  
**FF150**

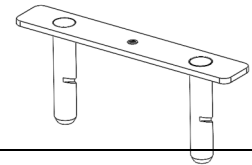
CONTENT			
ITEM	QUANTITY	DESCRIPTION	TOOLS NEEDED
1	1	PRISONER SEAT	
2	2	SEAT BRACKET	RATCHET
3	2	SEAT BELT HOLES—PLASTIC COVERS	TORQUE WRENCH
4	1	BUCKLE PULLER LOCATOR	DRILL MOTOR
5	1	BUCKLE TWIST HOLDER	7/16" SOCKET
6	12	#6 X 3/8" SHEET METAL ROUND HEAD SCREW	TORX WRENCH
7	2	1/4" X 1" BUTTON HEAD SOCKET CAP SCREW	
8	6	1/4 X 5/8" SEALING WASHER	
9	4	#14 X 2" HEX FLANGE SELF DRILLING SCREW	

**ANTI-SEIZE LUBRICANT MUST BE USED ON ALL STAINLESS STEEL FASTENERS TO PREVENT THREAD DAMAGE AND GALLING**

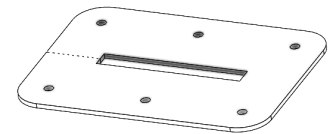
ITEM 1



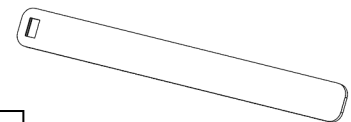
ITEM 2



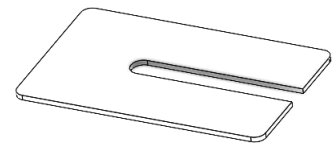
ITEM 3



ITEM 4



ITEM 5



**LAGUNA**  
 MANUFACTURING



## PROCEDURE

1. Remove contents from box, verify if all parts listed are present and free from damage.  
Carefully read and understand all instructions before attempting installation.  
**Failure to identify damage before installation could lead to a rejection of any claim.**
2. Remove Factory headrests. Figure 1.
3. Remove Plastic cap at center passenger seat belt, and unscrew metal support bracket underneath. Figures 2, & 3.



Figure 1

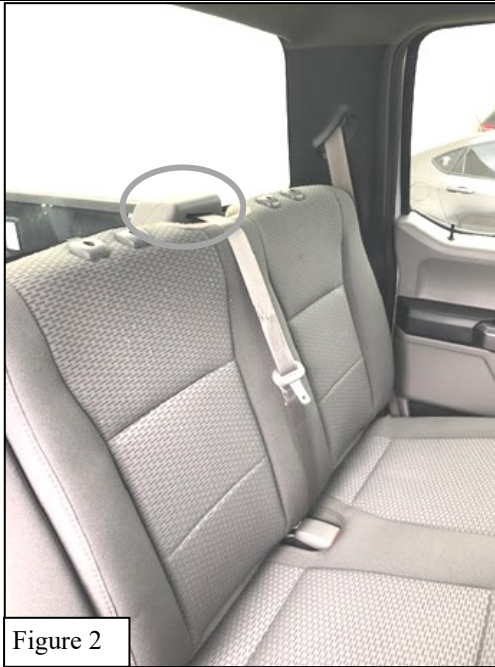


Figure 2



Figure 3

4. Unscrew factory seatbelt bolts on outside of seat, both passenger and driver side. Figure 4.
5. Install provided metal seat brackets (2) into factory headrest slots. MAKE SURE that slit cut in bar of bracket aligns with locking tab of headrest receiver / button. Figure 5.
6. Install provided driver side seat buckle twist holder (5), to help twist and hold buckle in position for slot cut in replacement seat cover. Figures 6, 7 & 8.



Figure 4

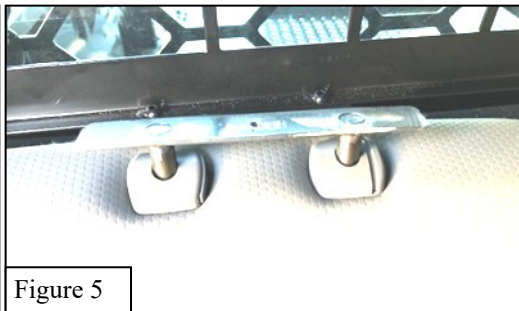


Figure 5



Figure 7



Figure 6



Figure 8



7. Fold driver side rear seat forward and place unscrewed metal support bracket and center seatbelt plug behind seat and push seat back into original position. Figure 9.
8. Install provided buckle puller locator (4) bar into driver side seat buckle. Figures 10 & 11.
9. Position passenger seat buckle "UP" and center seat buckle "DOWN".

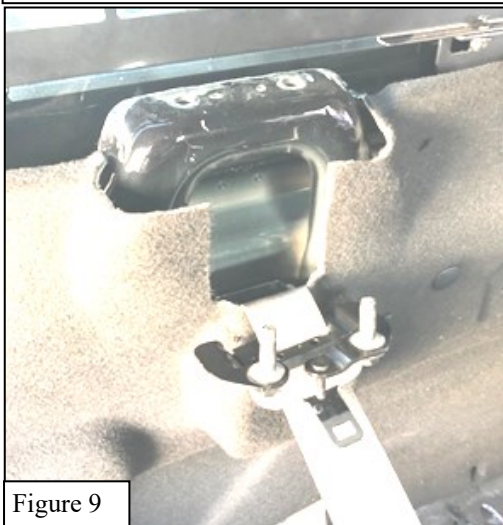


Figure 9



Figure 10

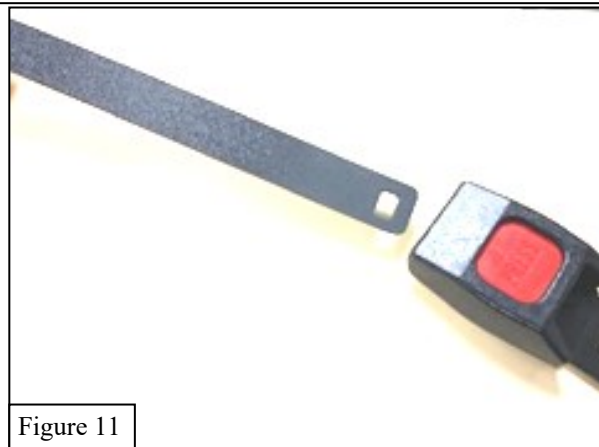


Figure 11

10. With the help of another person. Guide the seat (1) into the vehicle (One person on each end) While getting into the vehicle, angle the seat down towards ground for best install angle and place the seat position to install in top of the factory seat. Try to avoid contact with the roof. Figures 12 & 13.
11. Install belt through provided slot in seat cover side wall (be sure seat belt is not twisted) And reattach previously removed factory seat belts and screws. Figures 4 and 14.



Figure 12



Figure 13

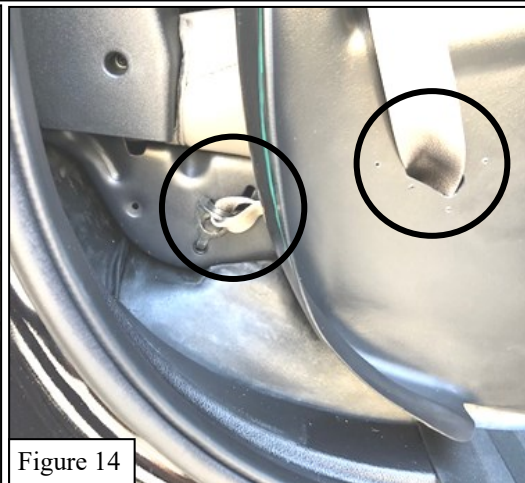


Figure 14

#### CARE INSTRUCTIONS

- REGULAR WAXING IS RECOMMENDED. DO NOT USE ANY TYPE OF POLISH OR WAX THAT MAY CONTAIN ABRASIVES
- STAINLESS STEEL PRODUCTS CAN BE CLEANED WITH MILD SOAP AND WATER. STAINLESS STEEL POLISH SHOULD BE USED TO POLISH SMALL SCRATCHES.
- GLOSS BLACK FINISHES SHOULD BE CLEANED WITH MILD SOAP AND WATER

12. Locate seat buckles into open slots cut in seat cover. NOTE: use provided buckle puller locator to locate and pull drivers side seat buckle into finished position. Figures 15, 16 & 17.
13. Install two provided 1/4" screws and washers (7, 8) into the top cover seat holes and into factory headrest metal brackets. Figure 18.
14. While pushing positive mounting tension on seat cover towards factory seat, drill (4) provided self-tapping screws and 1/4" sealing washers (9 & 8) into seat cover foot area and vehicle's floor. This will ensure the least possible gapping between seat cover and vehicle sides along entire vertical locations. Figure 19.
15. Install 2 provided seat belt cover plates (3) using #6 screws (6) over seat belt slots in each side of the seat cover. Figure 20.

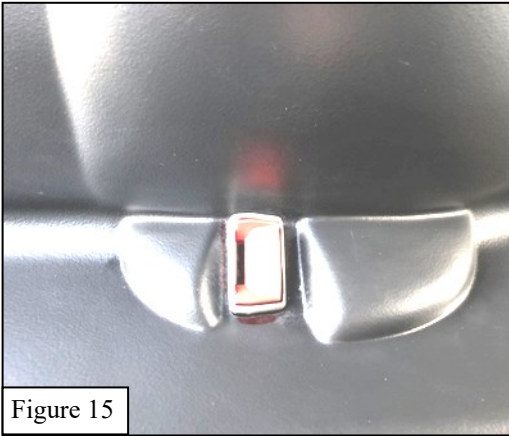


Figure 15

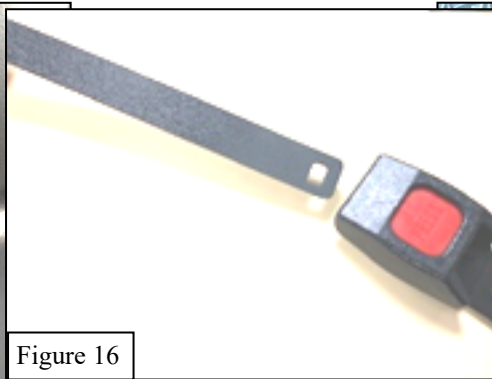


Figure 16

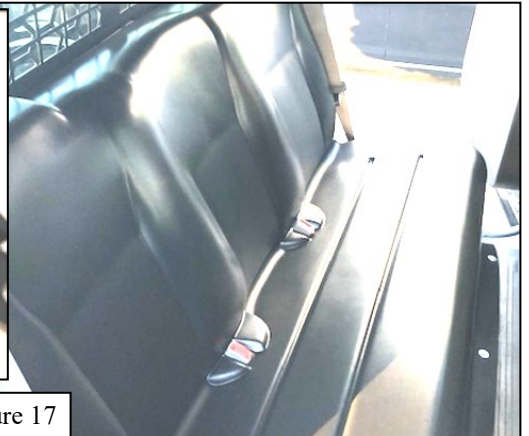


Figure 17

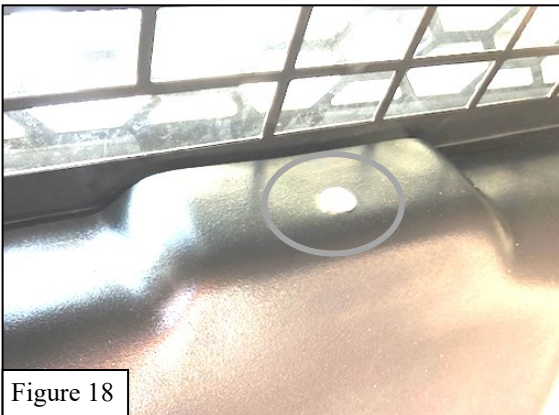


Figure 18



Figure 19



Figure 20



16. Best fit is achieved when minimal gapping is evident between seat and all vertical locations where seat cover aligns with factory plastic panels. Adjust screws in factory headrest mounting plates for best fit.

17. Tighten all hardware. Torque 1/4" to 8 Ft Lb.

